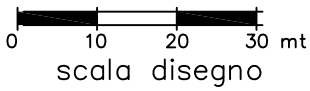
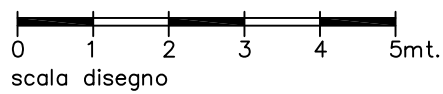
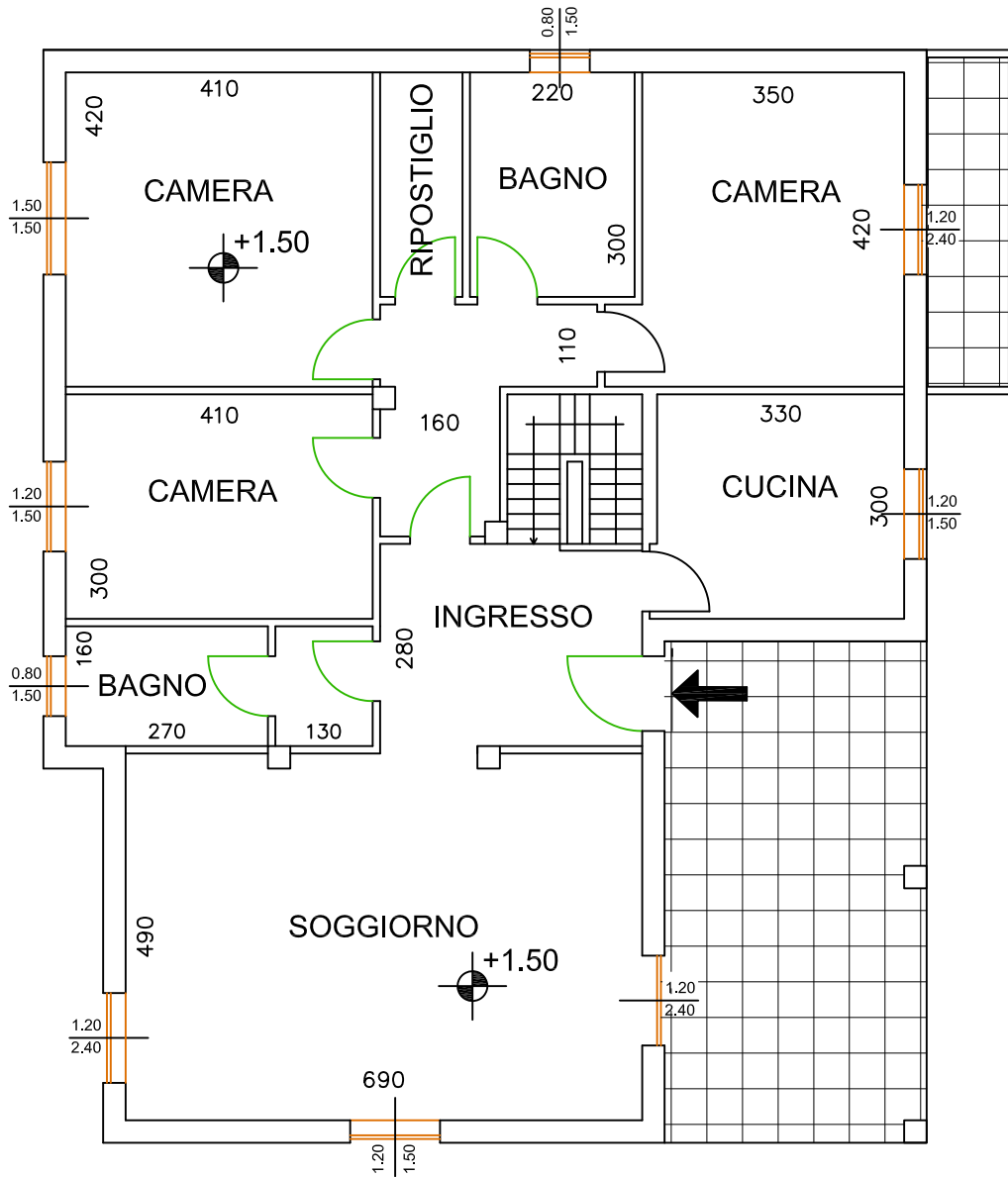


COMUNE DI CIRIMIDO (CO) - P.A. TOTI EST - PLANIVOLUMETRICO

EDILBETA S.R.L. - tel. 335.254.882
info@edilbeta.com - www.edilbeta.com



EDILBETA SRL - LOTTO 5ABC
Superficie recintabile : 2.181 mq
Volume edificabile: 1.157 mc
Superficie max copribile: 564 mq
Parcheggi pertinenziali: P4-P5-P9

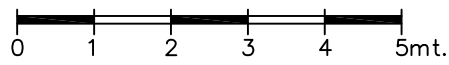
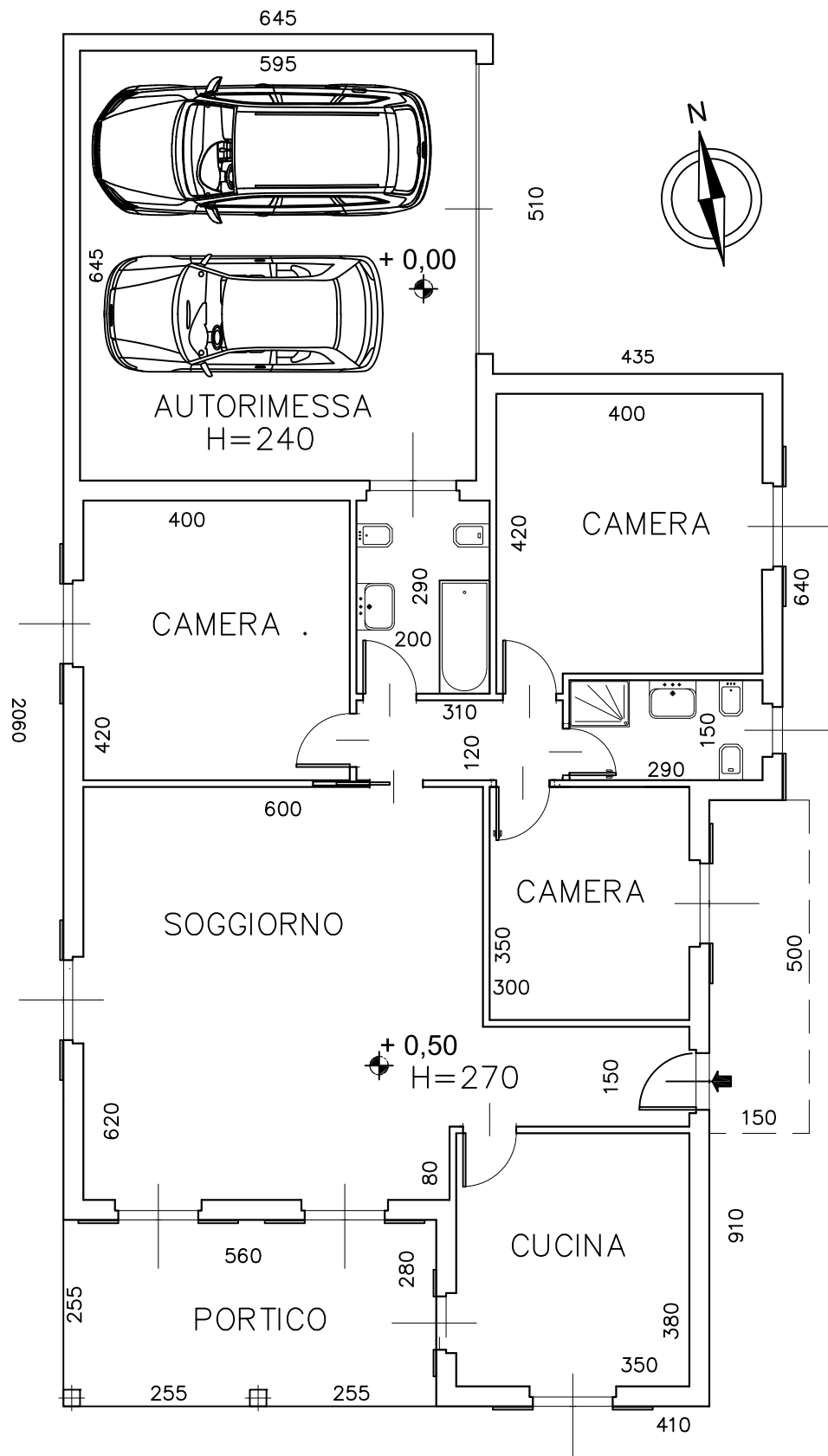


PIANO TERRA

S.L.P. = 145,00 mq

SUPERFICIE COPERTA = 168 mq

VOLUME TOTALE = 435 mc



scala disegno

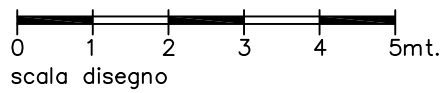
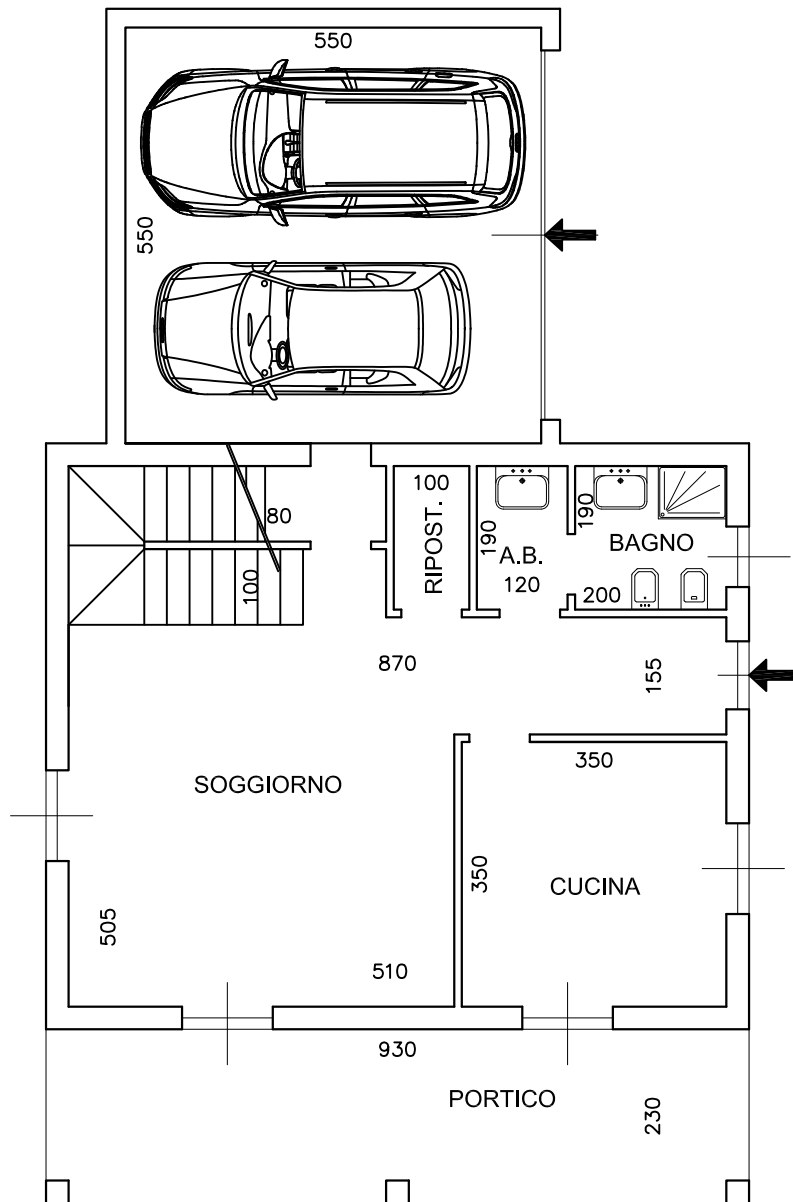
PIANO TERRA

S.L.P. = 132,00 mq

SUPERFICIE COPERTA = 190 mq

VOLUME TOTALE = 396 mc

[Lotto 5D]

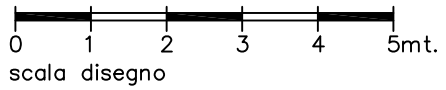
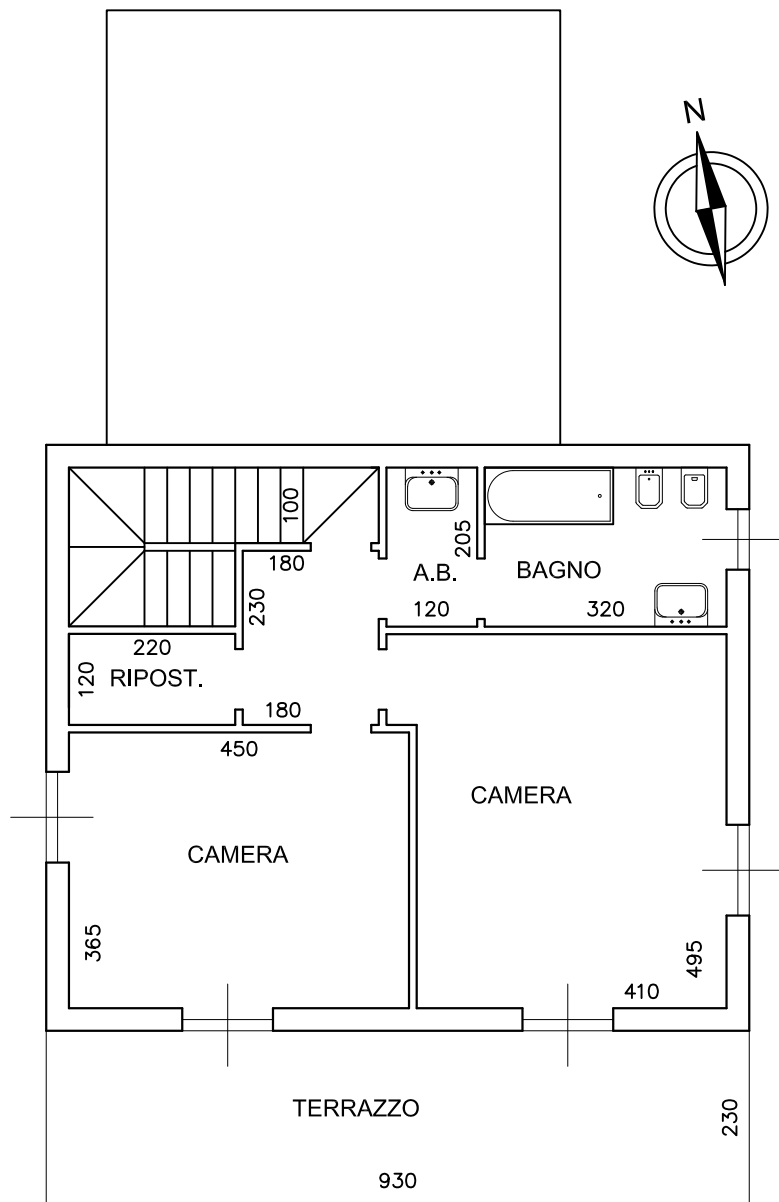


PIANO TERRA

S.L.P. = 72,00 mq

SUPERFICIE COPERTA = 127 mq

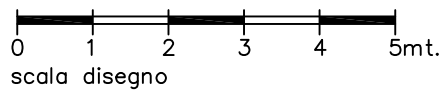
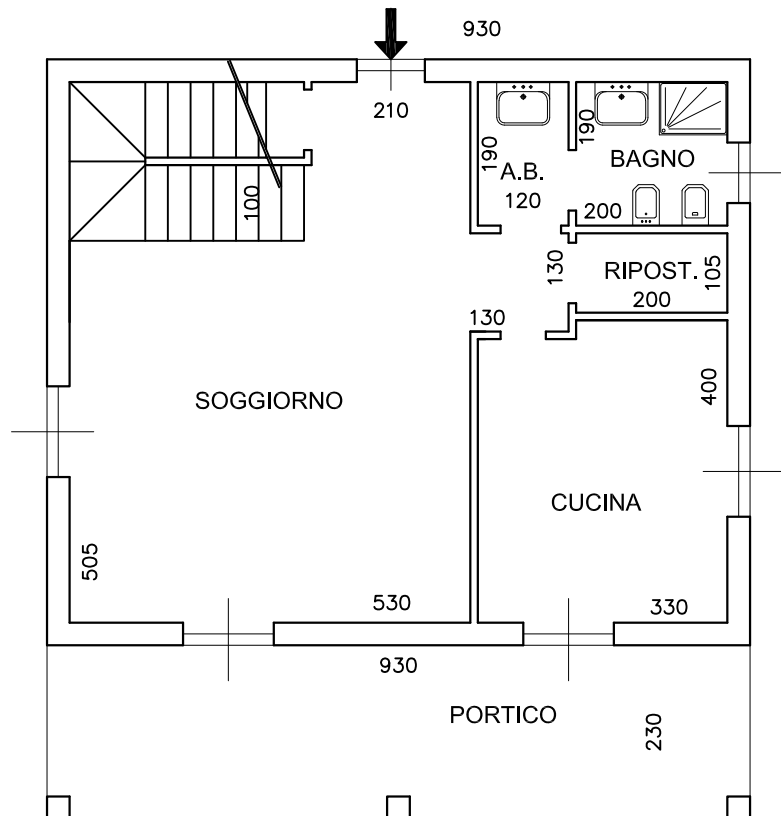
VOLUME TOTALE = 432 mc



scala disegno

PIANO PRIMO

S.L.P. = 65,00 mq
 SUPERFICIE COPERTA = 127 mq
 VOLUME TOTALE = 432 mc

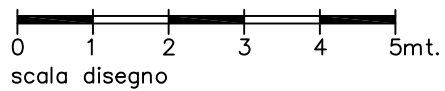
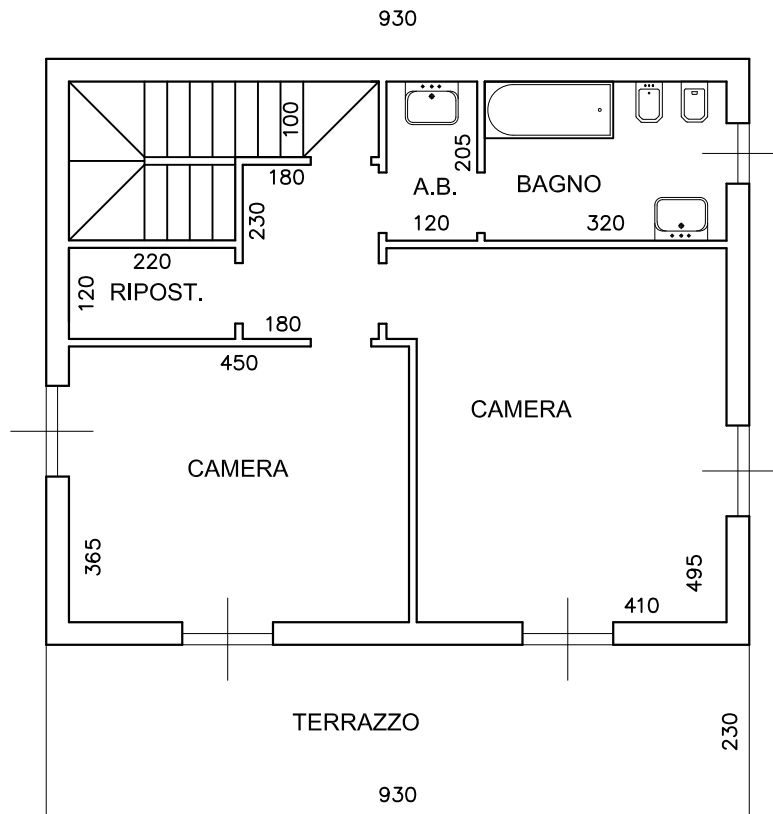


PIANO TERRA

S.L.P. = 72,00 mq

SUPERFICIE COPERTA = 93 mq

VOLUME TOTALE = 432 mc

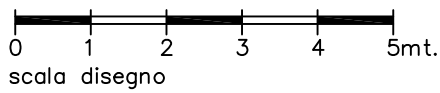
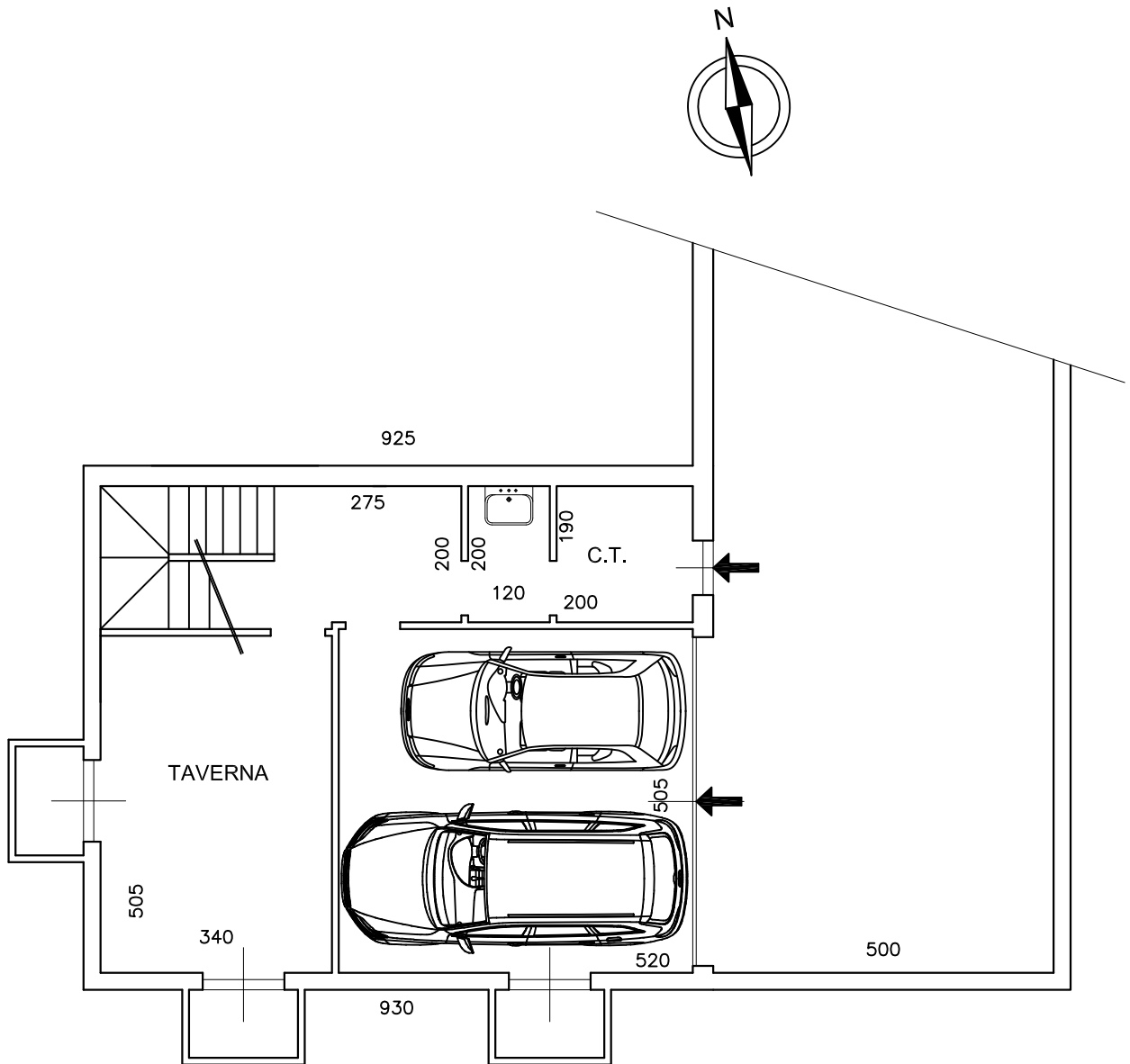


PIANO PRIMO

S.L.P. = 72,00 mq

SUPERFICIE COPERTA = 93 mq

VOLUME TOTALE = 432 mc



PIANO INTERRATO

S.L.P. = 71,00 mq

SUPERFICIE COPERTA = 93 mq

VOLUME TOTALE = 432 mc