

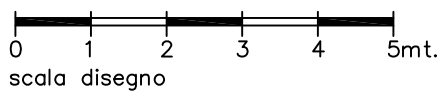
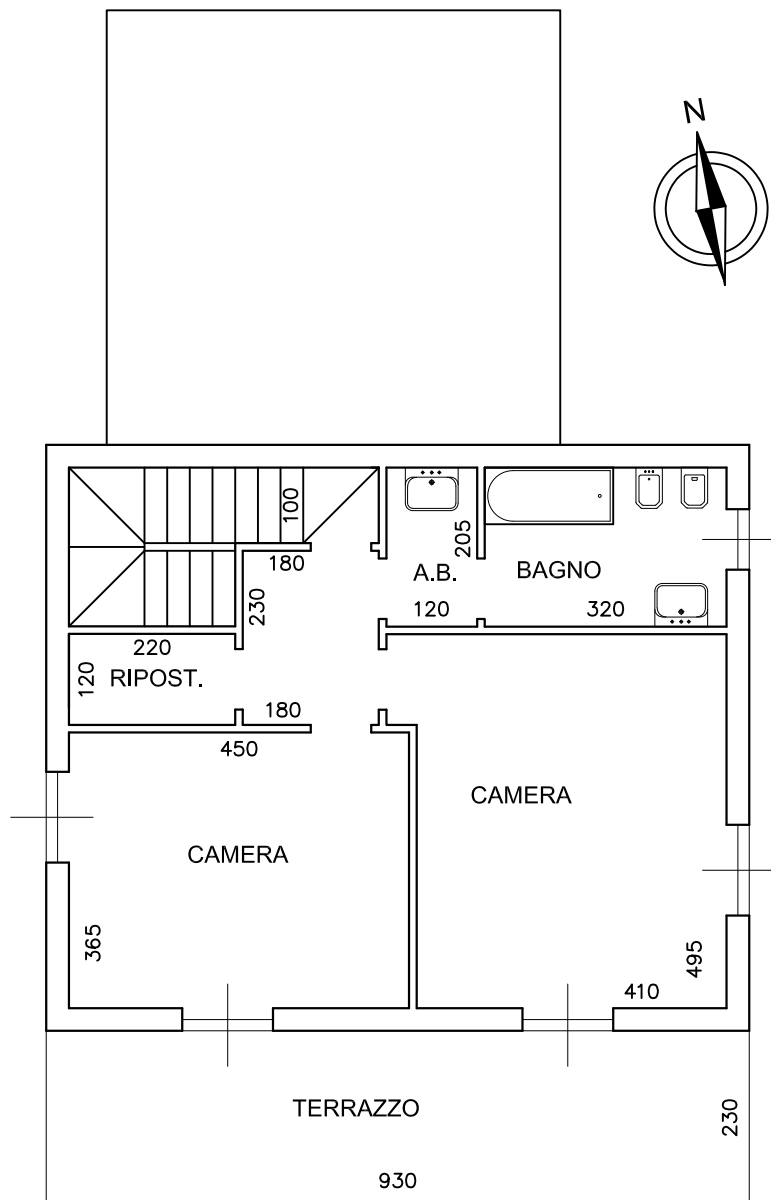
## PIANO TERRA

S.L.P. = 72,00 mq

SUPERFICIE COPERTA = 127 mq

VOLUME TOTALE = 432 mc

[Lotti 5A - 5B - 5C]



## PIANO PRIMO

S.L.P. = 65,00 mq

SUPERFICIE COPERTA = 127 mq

VOLUME TOTALE = 432 mc

[Lotti 5A - 5B - 5C]