

Via Soperga, 6 – 20127 Milano (MI)

Tel: +39.02.367.066.52

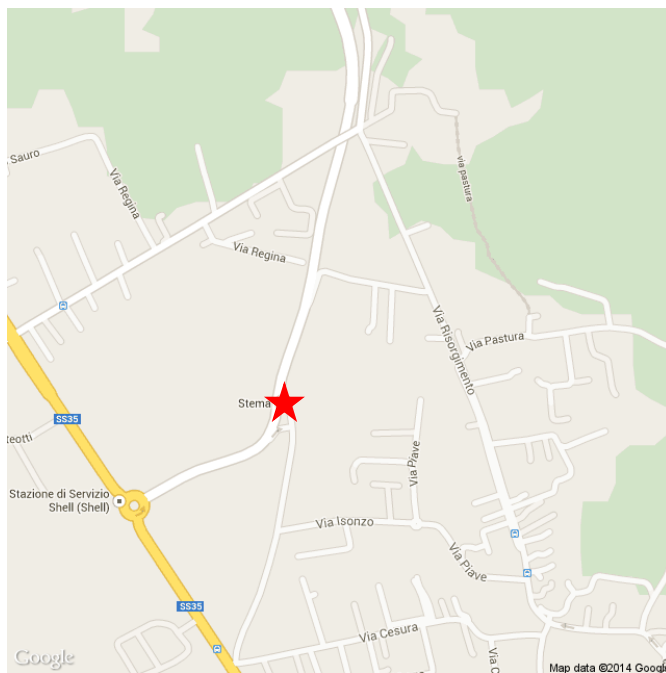
info@transunionsrl.com – www.transunionsrl.com

**ING. PIETRO GHIRARDELLI** – Amministratore Delegato

tel. +39.335.254.882 – p.ghirardelli@transunionsrl.com

## IMMOBILI AD USO PRODUTTIVO-LOGISTICO IN LOCAZIONE

**Vertemate (CO)** – Complesso industriale ad uso produttivo-logistico-direzionale ubicato in posizione strategica in prossimità della S.S. dei Giovi sulla direttrice Milano-Como



# TRANSUNION S.R.L. a socio unico

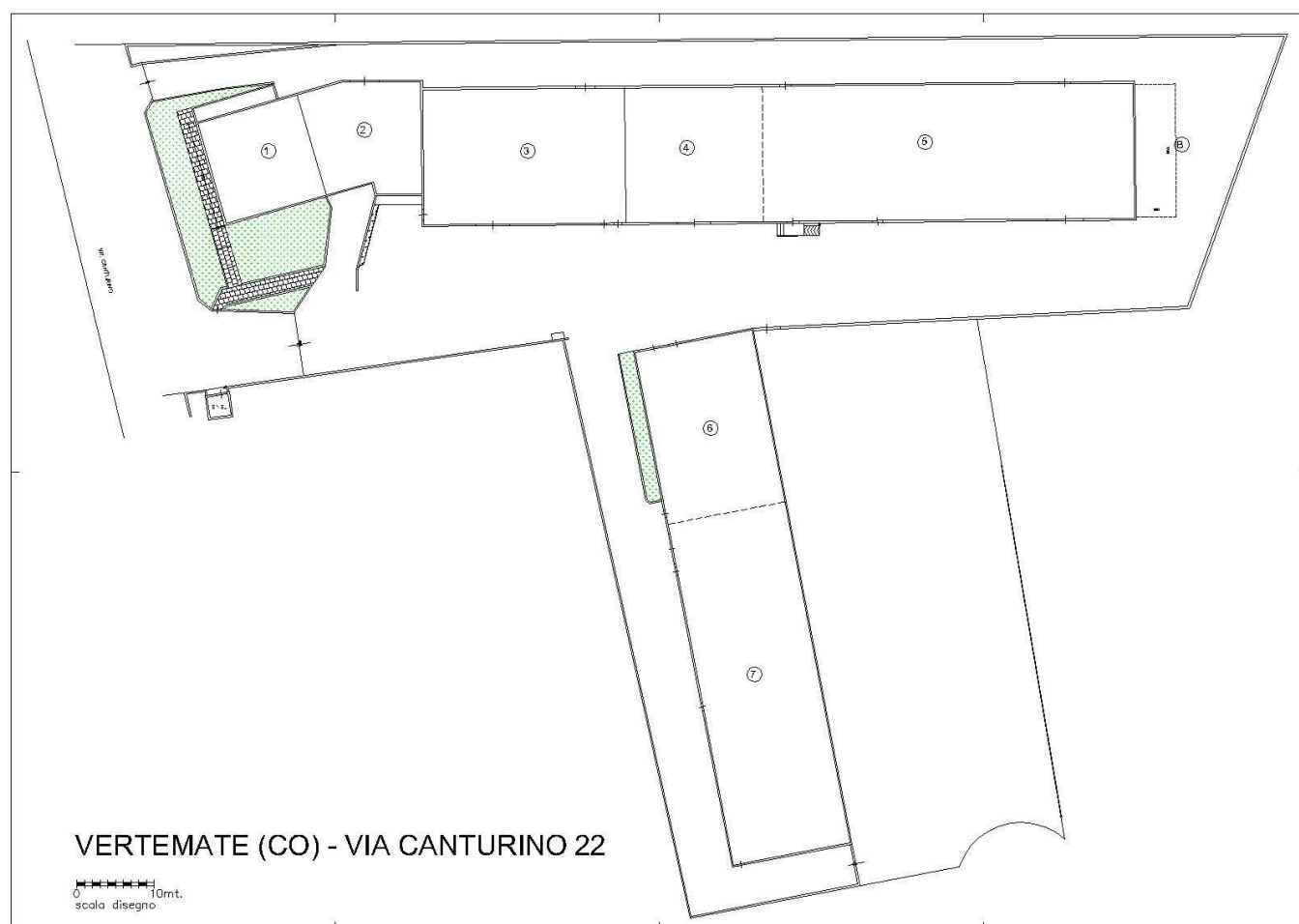
Via Soperga, 6 – 20127 Milano (MI)

Tel: +39.02.367.066.52

info@transunionsrl.com – www.transunionsrl.com

**ING. PIETRO GHIRARDELLI** – Amministratore Delegato

tel. +39.335.254.882 – p.ghirardelli@transunionsrl.com



# TRANSUNION S.R.L. a socio unico

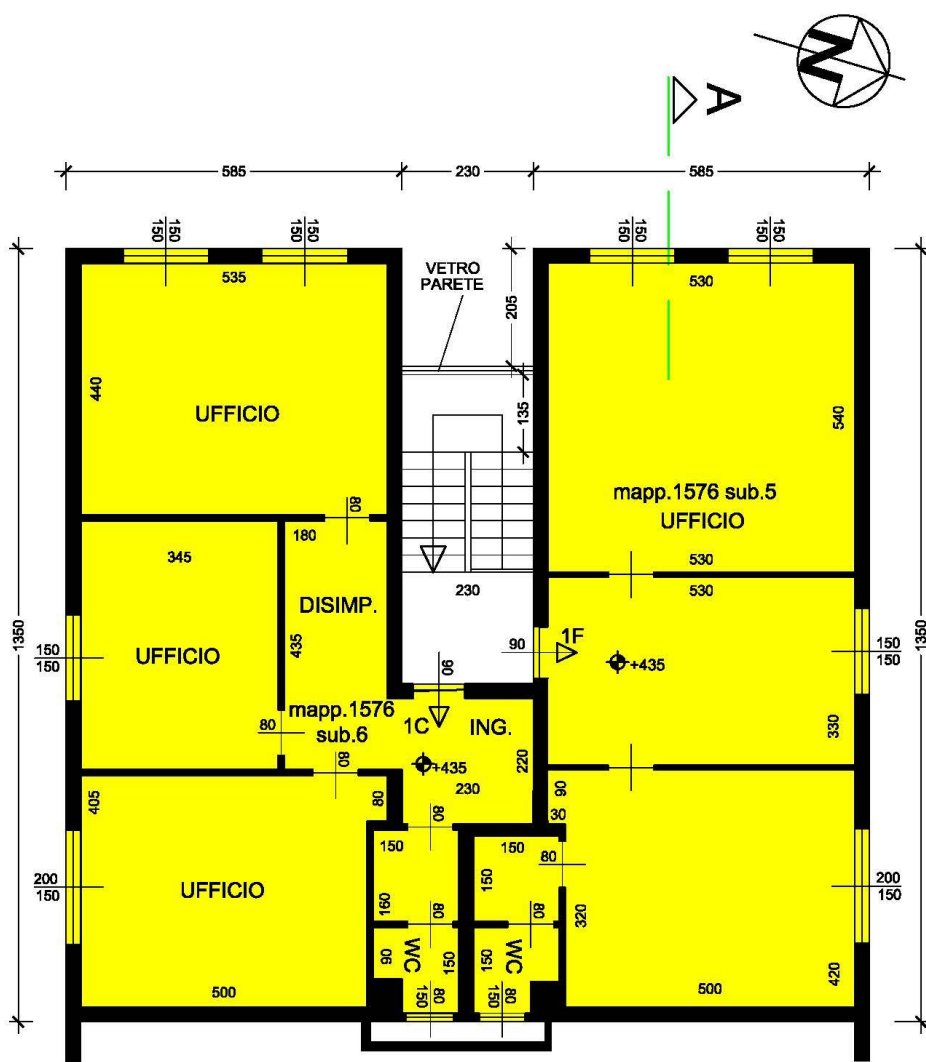
Via Soperga, 6 – 20127 Milano (MI)

Tel: +39.02.367.066.52

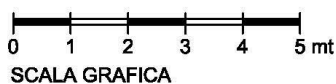
info@transunionsrl.com – www.transunionsrl.com

ING. PIETRO GHIRARDELLI – Amministratore Delegato

tel. +39.335.254.882 – p.ghirardelli@transunionsrl.com



VIA CANTURINO 22 - PIANO PRIMO - 1C-1F



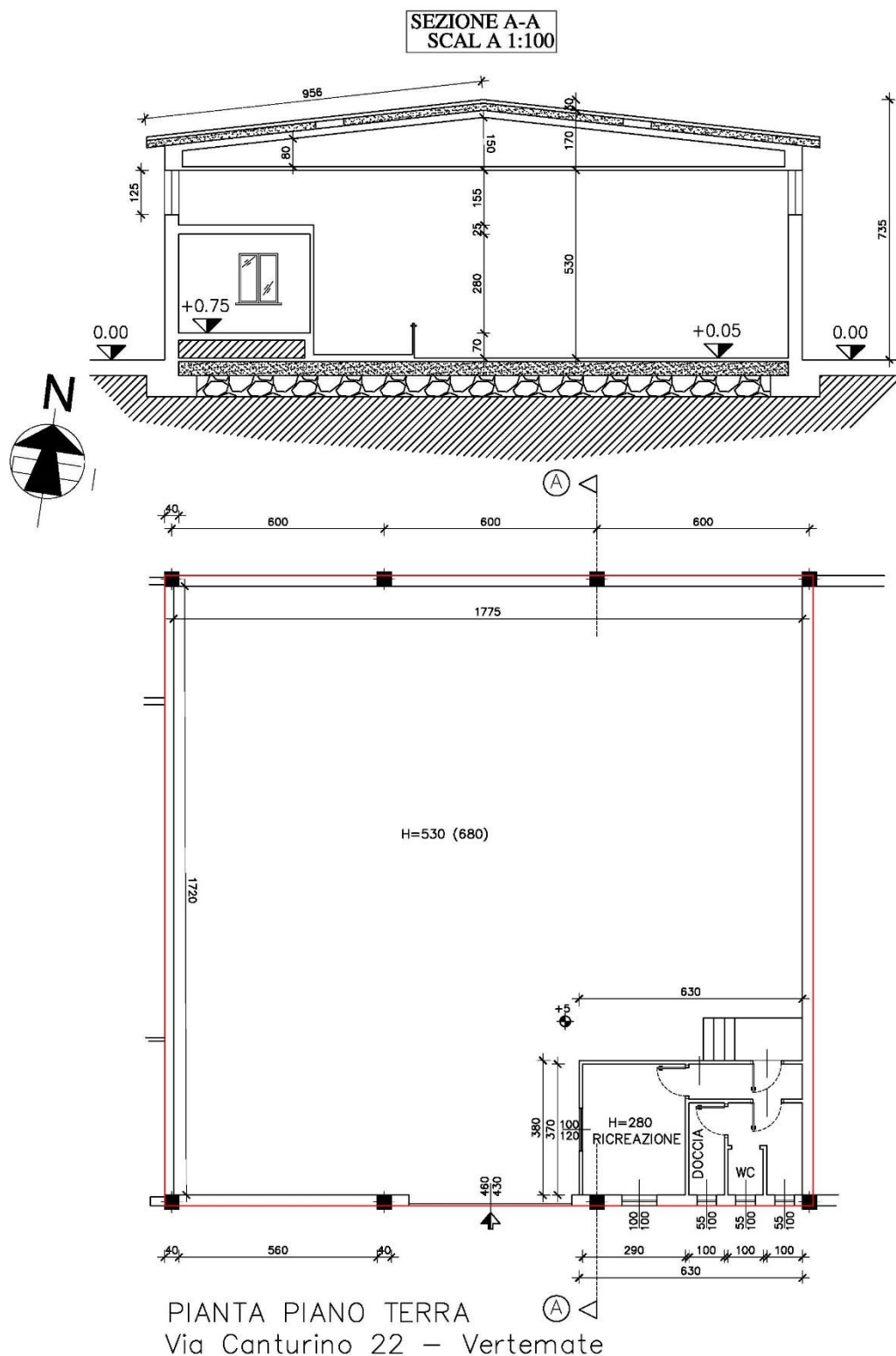
Via Soperga, 6 – 20127 Milano (MI)

Tel: +39.02.367.066.52

info@transunionsrl.com – www.transunionsrl.com

ING. PIETRO GHIRARDELLI – Amministratore Delegato

tel. +39.335.254.882 – p.ghirardelli@transunionsrl.com



0 1 2 3 4 5mt.  
scala disegno

**CAPANNONE CORPO 4**

mapp. 626 sub 504



# TRANSUNION S.R.L. a socio unico

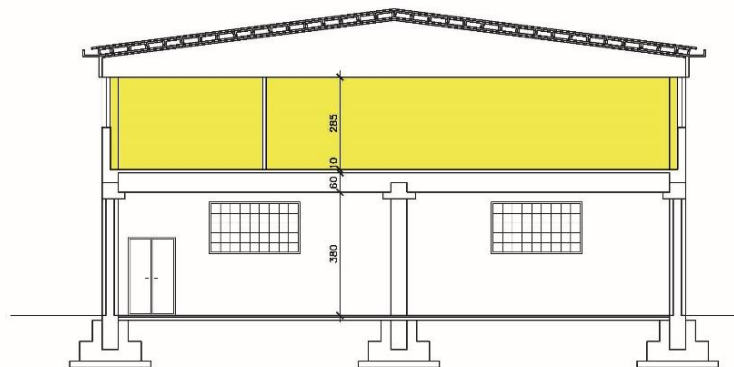
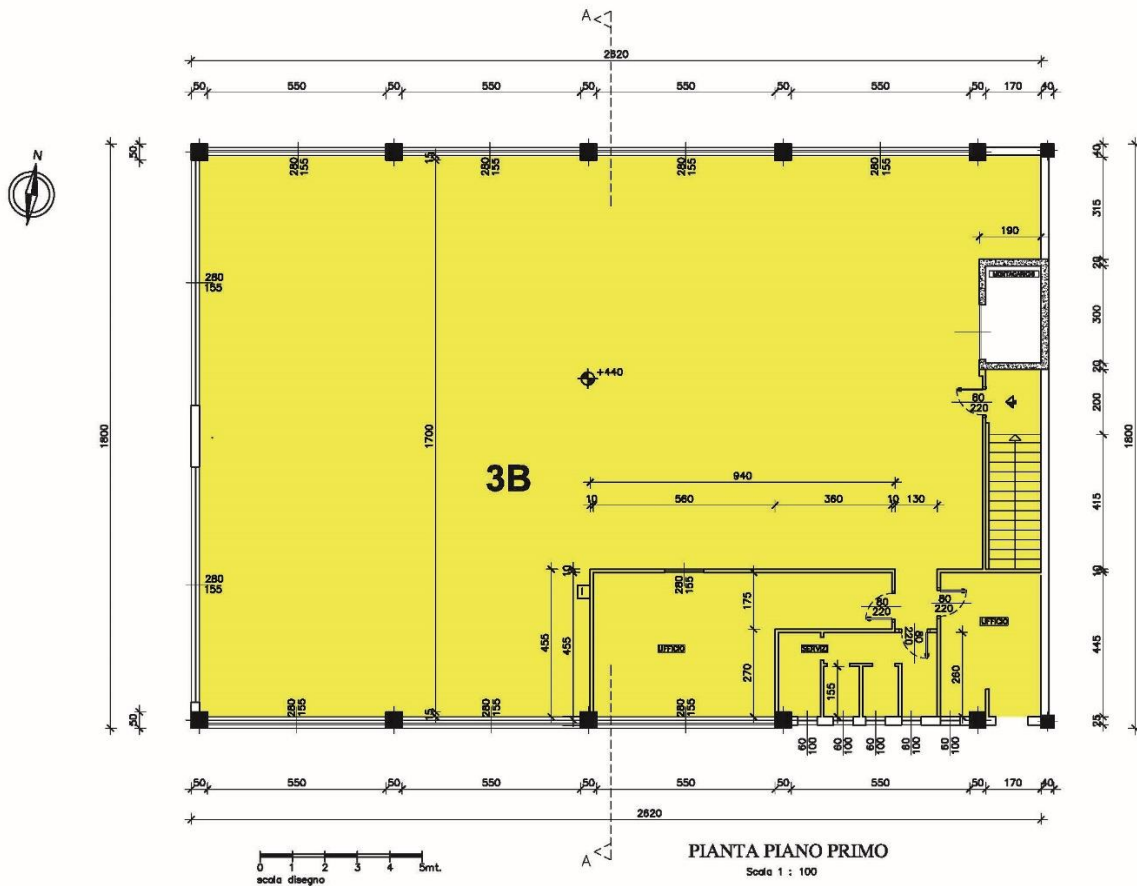
Via Soperga, 6 – 20127 Milano (MI)

Tel: +39.02.367.066.52

info@transunionsrl.com – www.transunionsrl.com

ING. PIETRO GHIRARDELLI – Amministratore Delegato

tel. +39.335.254.882 – p.ghirardelli@transunionsrl.com



SEZIONE A-A 1 : 100



# TRANSUNION

S.R.L. a socio unico

Via Soperga, 6 – 20127 Milano (MI)

Tel: +39.02.367.066.52

info@transunionsrl.com – www.transunionsrl.com

**ING. PIETRO GHIRARDELLI** – Amministratore Delegato

tel. +39.335.254.882 – p.ghirardelli@transunionsrl.com

---